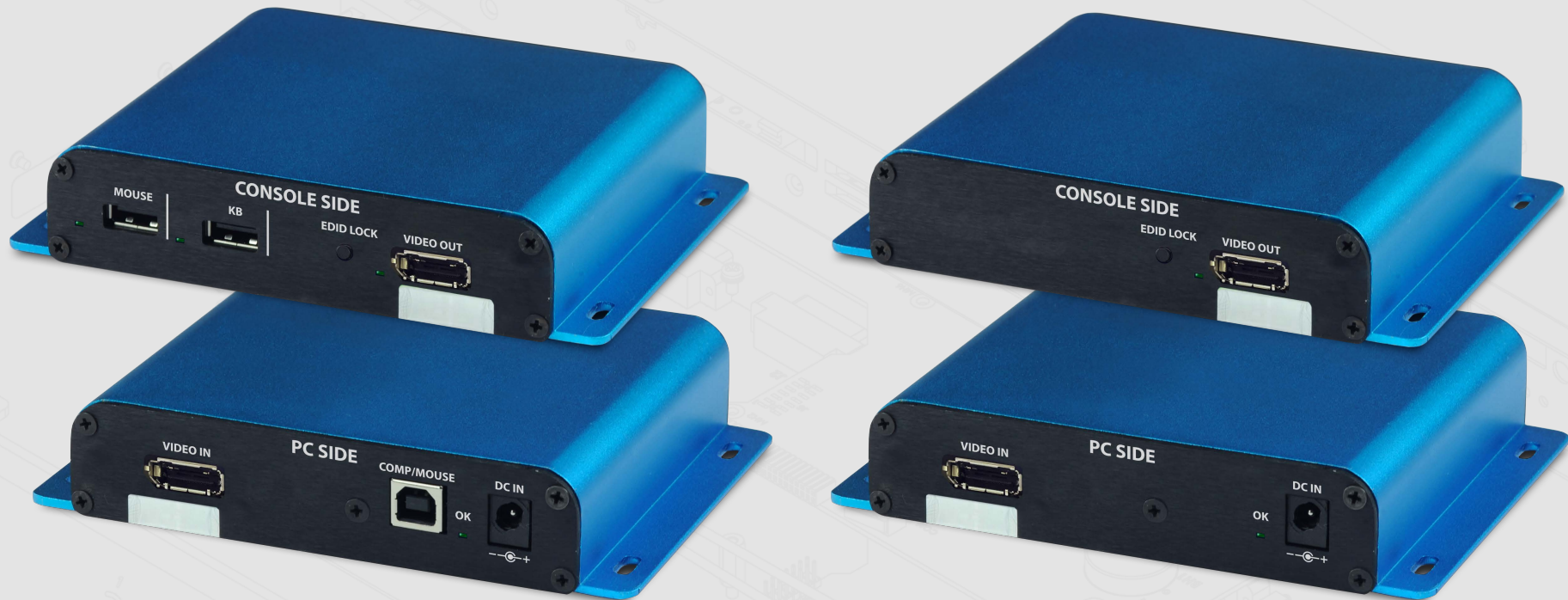


Secure Isolators



Models:

K497-1PHA

K497-1PXA

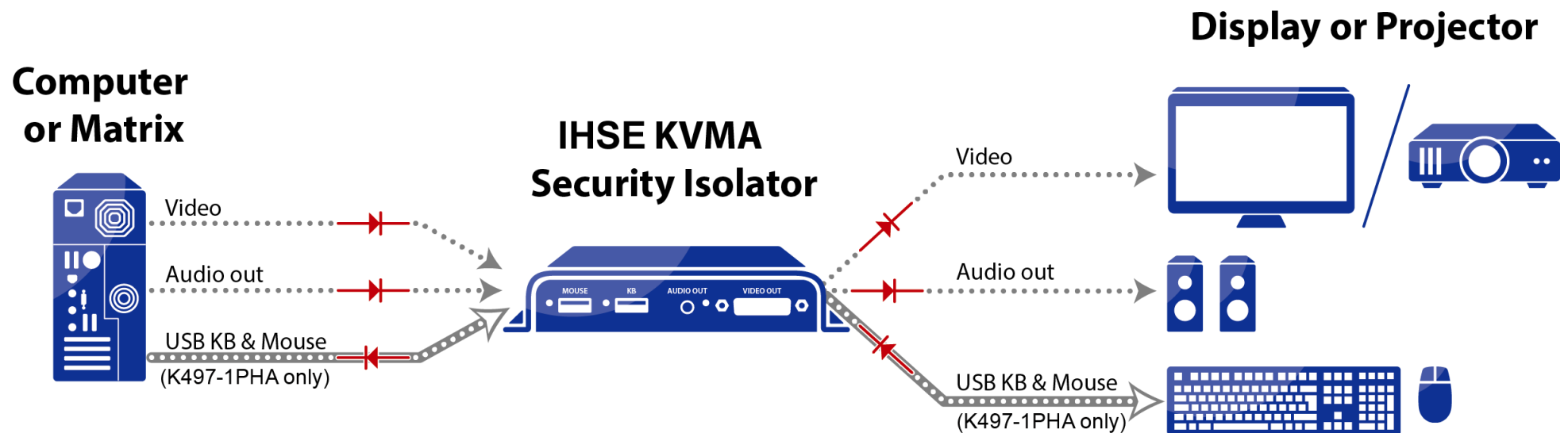
TABLE OF CONTENTS

Introduction	3
IHSE Secure Isolators	3
Installation	4
Connecting the Isolators	4
Operation	7
Running an EDID Capture	7

INTRODUCTION

IHSE Secure Isolators

The secure Isolator prevents vulnerable peripherals from mediating between compromised and secure computers by ensuring that video and audio flow in a single direction.



INSTALLATION

Connecting the Isolator

Step 1 - Connect the PC to the Isolator's PC SIDE:

1. **Audioconnection:** For all models, connect the PC to the Isolator's **AUDIO IN** port, using a 1/8" (3.5mm) stereo plug.
2. **Videoconnection:** For all models, connect the PC to the Isolator's **VIDEO IN** port, using the corresponding video cable (HDMI/DP).
3. **PC keyboard and mouse connection:** For the model K497-1PHA, connect the PC to the Isolator using a USB A to USB B cable. Connect the USB A end to the PC and the USB B end to the Isolator's **COMP/MOUSE** port.



**Power
LED**

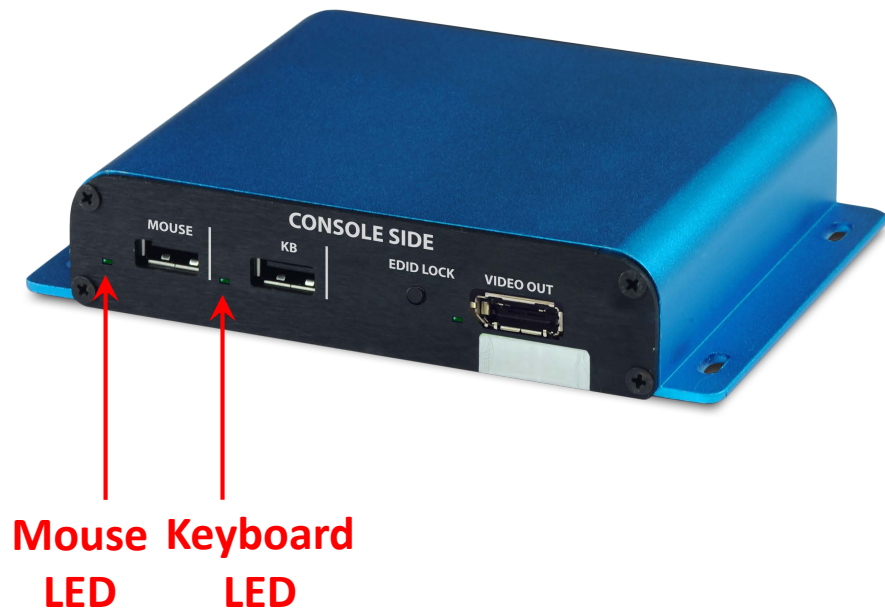
INSTALLATION

Step 2 - Connect the peripherals to the Isolator's CONSOLE SIDE:

1. **Audio connection:** For all models, connect the speakers to the Isolator's **AUDIO OUT** port.
2. **Video connection:** For all models, connect the monitor/projector cable to the Isolator's **VIDEO OUT** port.
3. **PC keyboard and mouse connection:** For the model K497-1PHA, connect a USB mouse and keyboard, to the Isolator's corresponding **MOUSE** and **KB** ports.

Both mouse and keyboard LEDs should light continuously.

Note: If either LED remains OFF, the Isolator does not recognize the device; use an alternative device.



INSTALLATION

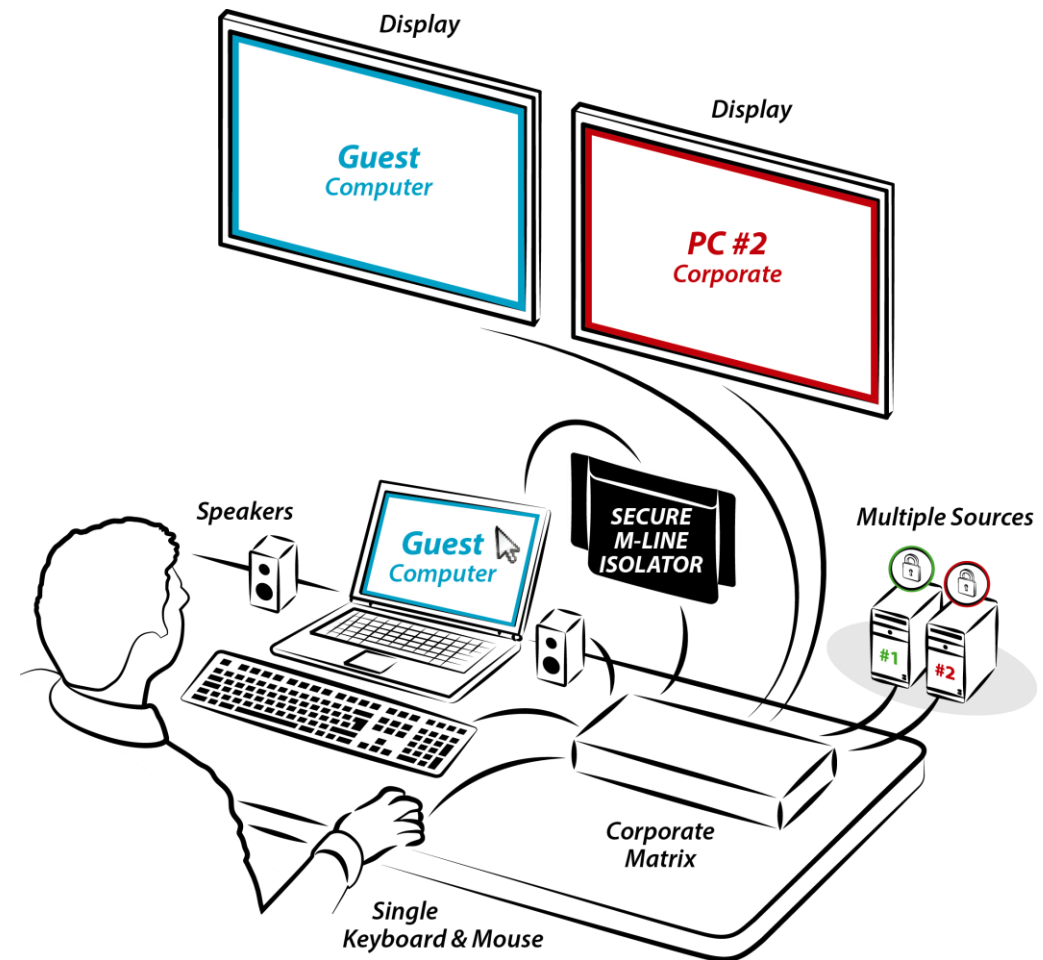
Step 3 - Power ON the Isolator

1. For all models, connect the power adapter to the Isolator's PC SIDE, DC IN port.
Power ON the Isolator by plugging it into an AC wall outlet.
2. The PC SIDE Power LED should light continuously.
If not, check the connections.

Step 4 - Make sure the PC and display are powered ON

Tamper Protection

The KVM Extenders are equipped with holographic anti-tampering labels to protect the product's chassis and to provide a clear visual indication if it has been opened or compromised.



OPERATION

Running an EDID Capture

Before using the Isolator, run a one-time EDID capture. This prevents the continuous transfer of potentially malicious data - from the display to the PC – that could infect the PC, cause data leakage, and so on.

Note: An EDID capture needs to be performed for new installations and when changing a display.

Preparation:

- Connect the PC and all peripherals to the unit, according to the diagram.
- Make sure the PC, display, and unit are ON.

To run an EDID capture:

1. On the PC SIDE, short-click the CAPTURE button – for less than one second. Warning: Long-clicking the CAPTURE button sends the unit into an undesired loop. If this happens, restart the unit and repeat the procedure. At first, the EDID LED flickers for a few seconds and then lights continuously.

Note: If the EDID LED is OFF, check the connections and that the display is powered ON. Then, repeat the procedure.

2. Restart the unit.



ihse.com

Copyright

©2019 All rights reserved. This information may not be reproduced in any manner without the prior written consent of the manufacturer. Information in this document is subject to change without notice.

Trademarks

All trademark and trade names mentioned in this document are acknowledged to be the property of their respective owners.

Disclaimer

While every precaution has been taken during preparation of this manual, the manufacturer assumes no liability for errors or omissions. The manufacturer assumes no liability for damages resulting from the use of the information contained herein. The manufacturer reserves the right to change specifications, functions, or circuitry of the product without notice. The manufacturer cannot accept liability for damage due to misuse of the product or due to any other circumstances outside the manufacturer's control (whether environmental or installation related). The manufacturer shall not be liable for any loss, damage, or injury arising directly, indirectly, incidentally, or consequently from the use of this product.

Document no.: q497_sa_0001 Rev.: 0001