

## Chukyo TV

Draco tera KVM system streamlines Japanese broadcaster's workflows

### The Customer

Chukyo TV one of Japan's foremost broadcast organizations, part-owned by the Nippon Television network, broadcasts TV channels to the whole of Japan from its main broadcast center in Nagoya.

Chukyo TV took the opportunity to upgrade the broadcast suites and establish more efficient and effective workflows when the organization moved to a new office headquarters at the end of 2016.

### The Challenge

With plans to locate staff over a large multi-floor building, the in-house engineering teams chose to house all broadcast technology equipment centrally and connect individual users throughout the building over copper and fiber cabling, whilst giving them all complete access to appropriate devices. This needed to be achieved with no degradation in quality or access limitation whilst maintaining total security and system resilience.

### The Solution

Working with the Chukyo engineering teams, local IHSE system integrator ITOCHU Cable Systems Inc. supplied and installed a large, 160 port, IHSE Draco tera enterprise KVM switch along with a separate, smaller, 32 port Draco tera compact KVM switch.

Connection between computers and workstations



throughout the building is via single-mode fiber and Cat X copper cabling. The two switches provide studio and editing staff with instant access to the main MTX switch, the report station and the connection center. This enables free access and switching of each MTX at every operator workstation. The switches are interconnected by means of Matrix Grid, allowing the whole installation to operate as

a single system. System administration and supervision is provided by the Java-based Draco tera Tool operating over several consoles for flexibility and convenience.

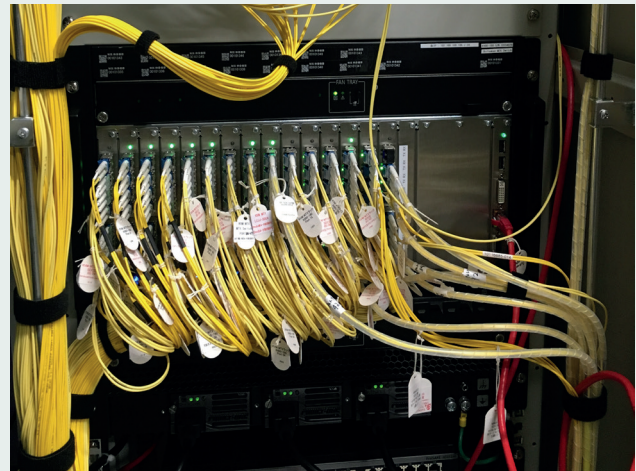
“ The extensive access control and supervisory capability of the IHSE switches enables us to designate which individual users have access to specific devices in the center. For example individual users can be allowed to control playback of video without being able to edit it. Or they can be allowed to only access specific SNG and FPU devices.

**Ryuhei Takahashi**  
Deputy Director at CTV Technology

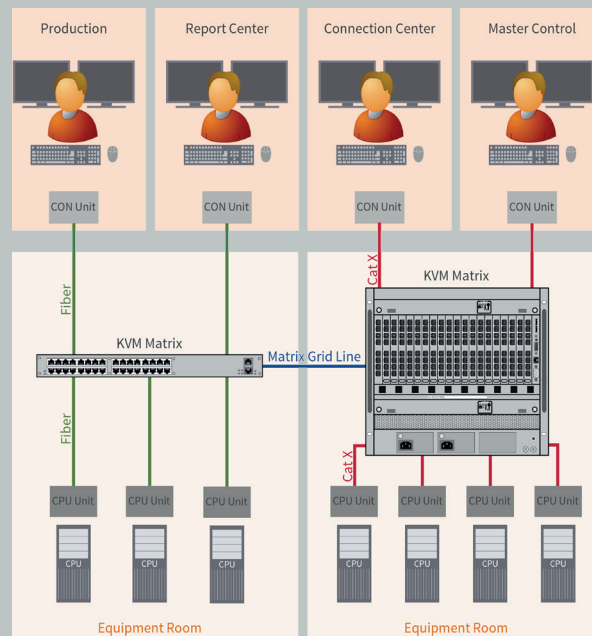
### The Benefit

The Draco tera’s simple and reliable operation enables producers, editors and other staff involved in the broadcast operation to work effectively and efficiently; to produce the highest possible quality broadcast output.

They can freely access editing, caption, scheduling and other broadcast tools from their own workstation consoles, without having to move to another desk or location. The system provides instant connectivity, switching and delay-free video and audio transmission throughout the studios, production floors and other areas within the broadcast facility.



### Functional Diagram



### Installation

- > Customer: Chukyo TV
- > Location: Nagoya, Japan
- > KVM supply and integration: ITOCHU Cable Systems Inc.

### KVM products in use

- > Draco tera enterprise matrix switch
- > Draco tera compact matrix switch
- > Draco vario extenders

**IHSE ASIA**  
IHSE GmbH Asia Pacific Pte Ltd  
158 Kallang Way, #07-13A  
Singapore 349245



+65 (6841) 470 7

info@ihseapac.com  
www.ihseapac.com

**IHSE GmbH**  
Maybachstr. 11  
88094 Oberteuringen  
Germany



+49 (7546) 9248-0  
+49 (7546) 9248-48

info@ihse.de  
www.ihse.de